

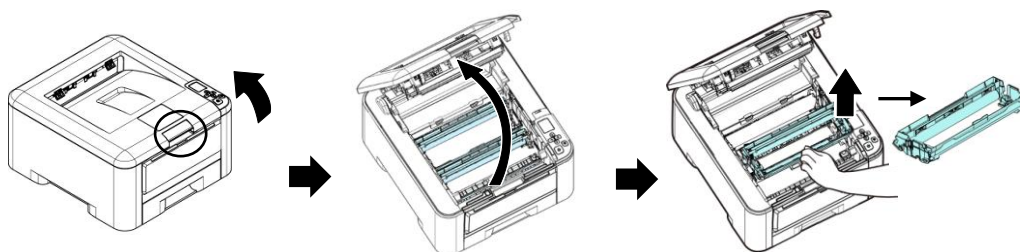


251-1439-0V100

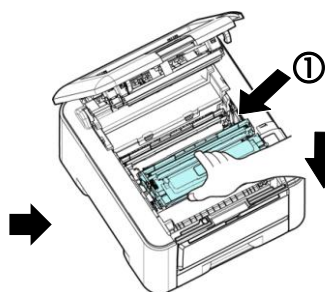
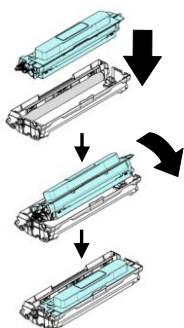
1 包装内容



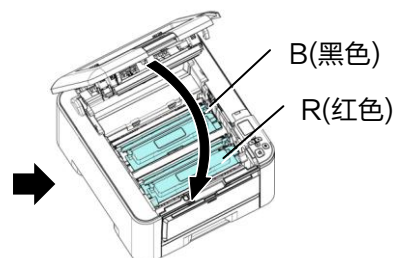
2 安装墨粉盒



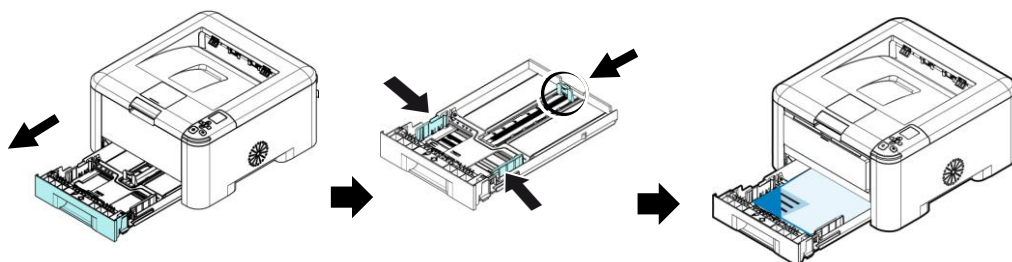
2



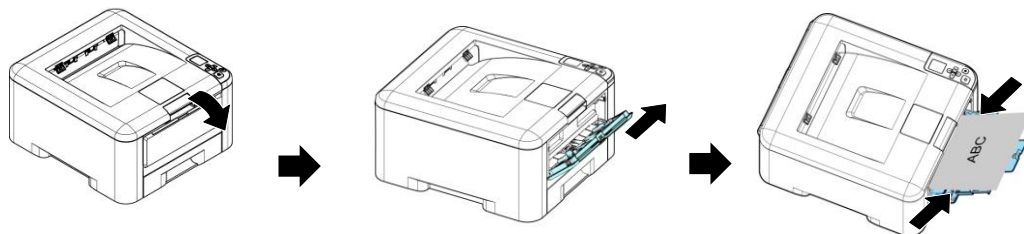
重复以上步骤，
安装另一个颜
色的墨粉盒。



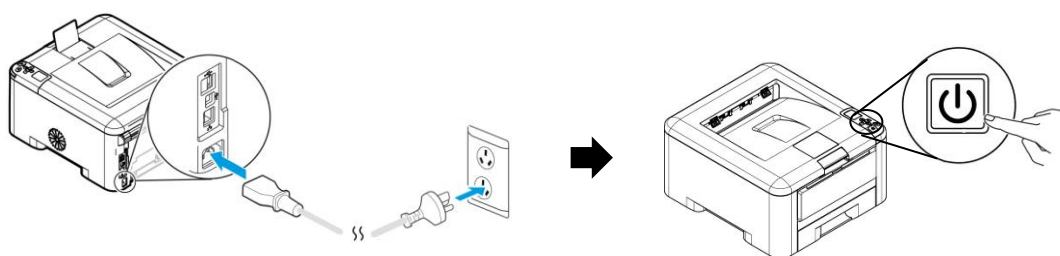
3 将纸张放入纸盒 1



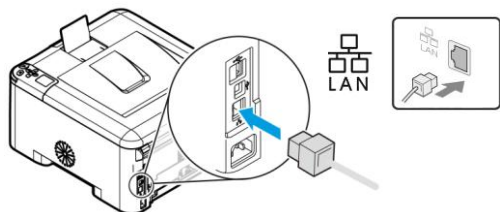
4 将纸张放入手动纸盒



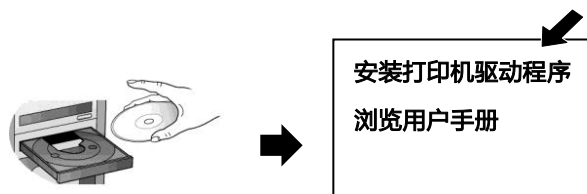
5 连接电源



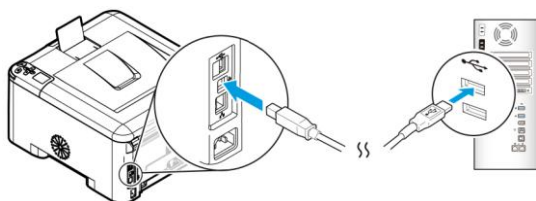
6 透过网络连接计算机



7 安装打印机驱动程序



8 透过 USB 端口连接计算机



! 更多操作的细节，请参考驱动光盘内的用户手册。

